

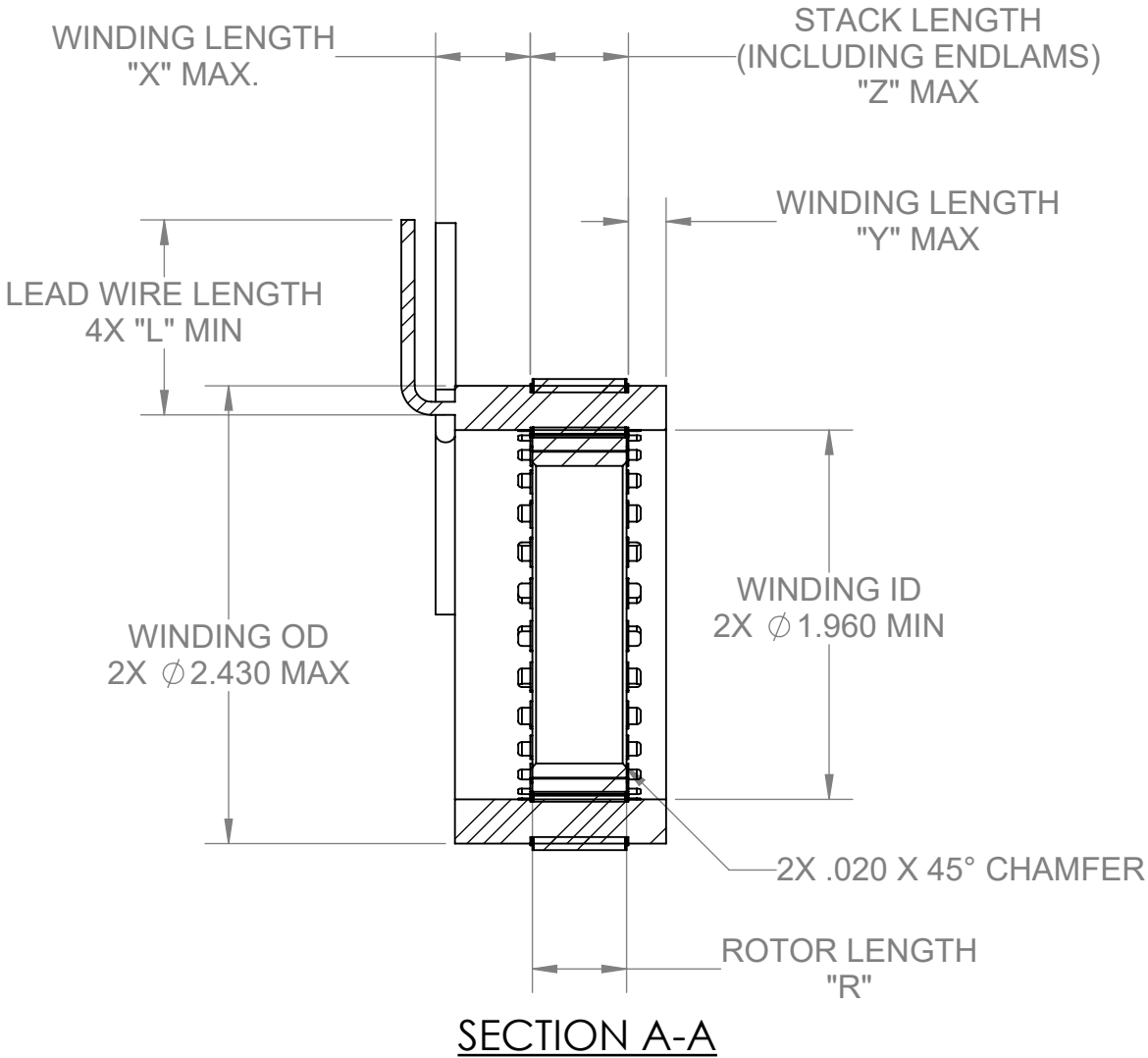
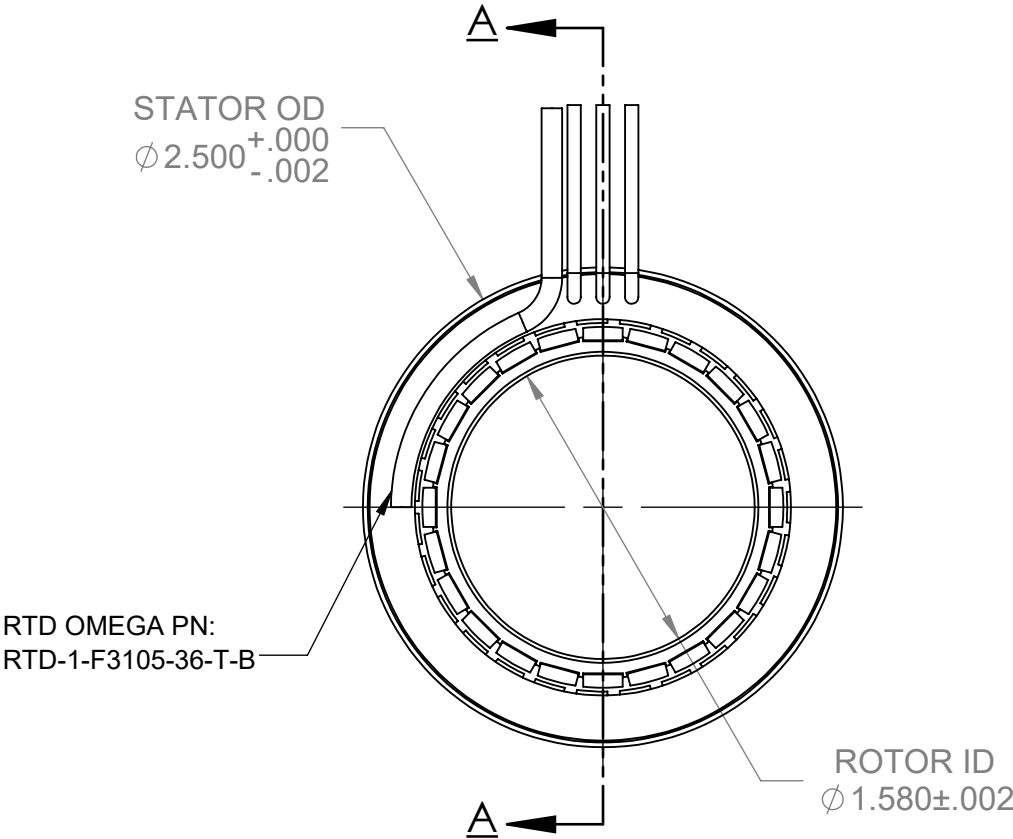
PROPRIETARY STATEMENT: THIS DOCUMENT CONTAINS CONFIDENTIAL INFORMATION PROPRIETARY TO AVEOX, INC. IT MAY NOT BE DUPLICATED IN WHOLE OR IN PART, DISCLOSED TO UNAUTHORIZED PERSONS, OR USED IN THE MANUFACTURE OF PARTS, ASSEMBLIES, OR FOR MANUFACTURING PROCESSES DEFINED HEREIN, WITHOUT PRIOR WRITTEN PERMISSION FROM AVEOX, INC.

REVISIONS			
REV.	DESCRIPTION	DATE	APPROVED
A	INITIAL RELEASE PER ERN # 8183	12/9/2020	SEE ECO APPROVAL

NOTES: (UNLESS OTHERWISE SPECIFIED)

1.
- STATOR LEAD WIRE PER M22759/11
PHASE A: RED
PHASE B: WHITE
PHASE C: BLACK

2.
- SEE TABLE FOR CONFIGURATION




UNLESS OTHERWISE SPECIFIED: DIMENSIONS ARE IN INCHES			CONTRACT No.		AVEOX, INC. 2265A Ward Avenue Simi Valley, CA. 93065 805-915-0200 (Phone) 805-915-0201 (FAX)		
TOLERANCE ON ANGLE: $\pm 0.5^\circ$ ON DECIMALS: INCH MILLIMETER SURFACE(μ in.) .XX $\pm .01$.X $\pm .5$ mm .XXX $\pm .005$.XX $\pm .1$ mm REMOVE ALL BURRS BRAKE CORNERS R.005/.010. INTERPRET DRAWING PER ASME Y14.5-2009 DO NOT SCALE DRAWING DIMENSIONS APPLY AFTER SURFACE FINISH			APPROVALS	DATE	TITLE: O&M DRAWING, STATOR AND ROTOR SET, UT-2500-24P/4, SENSORLESS TABULATED		
			DRAWN E. NG	11/17/20			
			CHECK				
			ENGINEER				
THIRD ANGLE PROJECTION			SIZE B		CAGE CODE 1C2S2	DWG No. 6100391-XX	REV A
			SCALE: NONE		CALC. WEIGHT:	SHEET 1 OF 2	

PROPRIETARY STATEMENT: THIS DOCUMENT CONTAINS CONFIDENTIAL INFORMATION PROPRIETARY TO AVEOX, INC.
IT MAY NOT BE DUPLICATED IN WHOLE OR IN PART, DISCLOSED TO UNAUTHORIZED PERSONS, OR USED IN THE MANUFACTURE
OF PARTS, ASSEMBLIES, OR FOR MANUFACTURING PROCESSES DEFINED HEREIN, WITHOUT PRIOR WRITTEN PERMISSION FROM AVEOX, INC.

REVISION HISTORY			
REV.	DESCRIPTION	DATE	APPROVED
-	SEE SHEET 1	-	-

PART NUMBER 2	DESCRIPTION	ROTOR LENGTH "R"	LEAD WIRE AWG	LEAD WIRE LENGTH "L"	STACK LENGTH "Z" INCLUDING ENDLAM	ENDTURN HEIGHT, LEAD SIDE "X"	ENDTURN HEIGHT, BOTTOM "Y"
6100391-01	O&M DRAWING, STATOR AND ROTOR SET, UT-2505-24P/4, SENSORLESS	0.500	14	12	0.56	0.50	0.20
6100391-02	O&M DRAWING, STATOR AND ROTOR SET, UT-2507-24P/4, SENSORLESS	0.750	14	12	0.81	0.50	0.20
6100391-03	O&M DRAWING, STATOR AND ROTOR SET, UT-2510-24P/4, SENSORLESS	1.000	14	12	1.06	0.50	0.20
6100391-04	O&M DRAWING, STATOR AND ROTOR SET, UT-2512-24P/4, SENSORLESS	1.250	14	12	1.31	0.50	0.20
6100391-05	O&M DRAWING, STATOR AND ROTOR SET, UT-2515-24P/4, SENSORLESS	1.500	14	12	1.56	0.50	0.20
6100391-06	O&M DRAWING, STATOR AND ROTOR SET, UT-2520-24P/4, SENSORLESS	2.000	14	12	2.06	0.50	0.20



2265A Ward Avenue Simi Valley, CA. 93065
805-915-0200 (Phone) 805-915-0201 (FAX)

AVEOX, INC.

TITLE:

O&M DRAWING, STATOR AND
ROTOR SET, UT-2500-24P/4,
SENSORLESS TABULATED

SIZE

B

CAGE CODE

1C2S2

DWG No.

6100391-XX

REV

A

SCALE: NONE

SHEET 2 OF 2